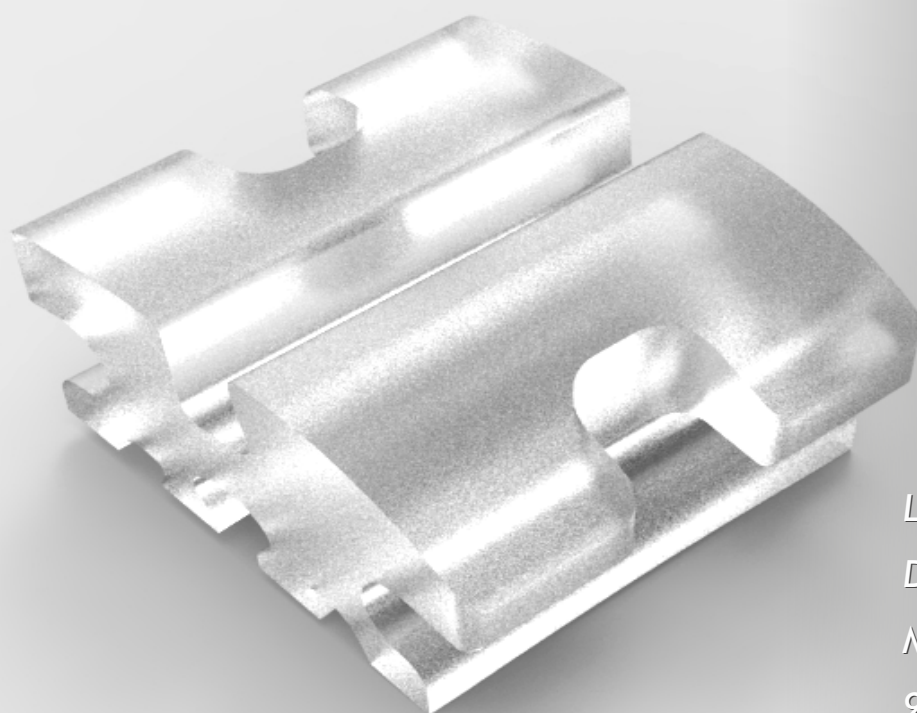


d'art<sup>TM</sup>

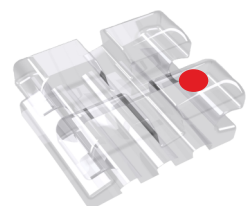
MINI CERAMIC

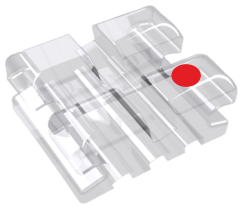
POLY CRYSTALLINE

by Modern Orthodontics



*Low Profile Translucent  
Dove Tail Grooves  
Micro Crack Free  
99.9% Pure Alumina*





d'art™  
MINI BRACKET  
CERAMIC BRACKET SYSTEM

d'art™  
Mini Size  
CERAMIC BRACKET SYSTEM

*Mini ceramic bracket system featuring  
small size and great strength*

### *Mini Size*

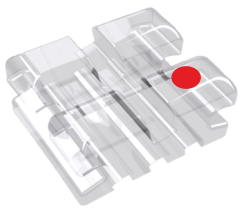
Smaller than most of ceramic  
brackets in the industry

### *Low Profile Design*

for comfort and minimum occlusal  
interferences

### *Dove Tail Grooves*

for pure  
mechanical bonding



d'art™  
MINI BRACKET  
CERAMIC BRACKET SYSTEM

**Highest Quality Material**  
Made from high quality poly crystalline ceramic

**Smooth, Strong and Contoured Tie Wings**  
For added patient comfort

**Archwire Slot Design**  
Diamond and heat polished for superior sliding mechanics

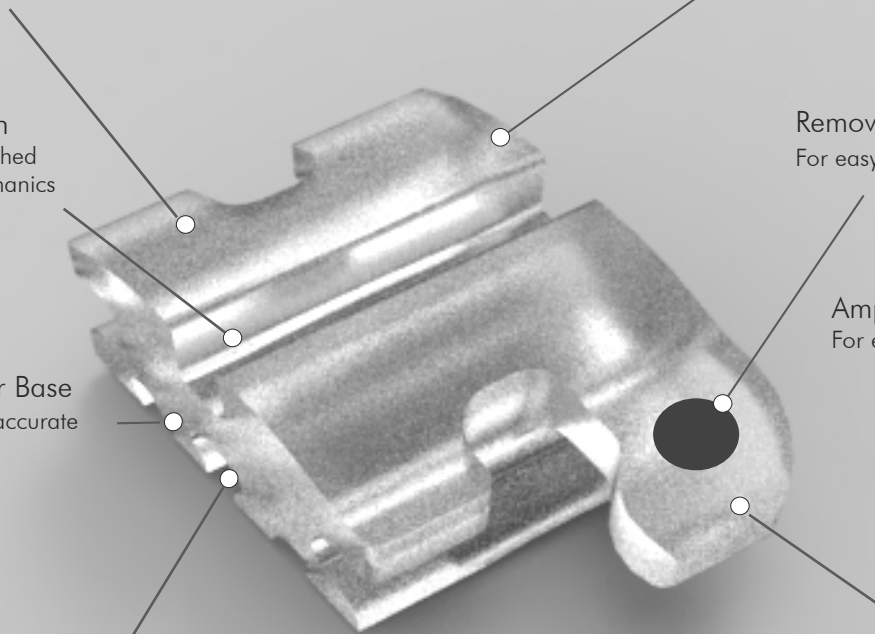
**Removable Color Coded ID Dot**  
For easy bracket selection

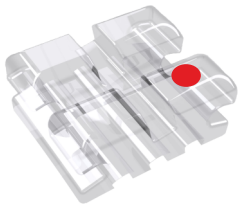
**Compound Contour Base**  
Provides simplified and accurate bracket placement

**Ample Tie Wing Area**  
For easy bracket ligation

**Dovetail Bonding Base**  
Provides superior mechanical bond strength and predictable debonding

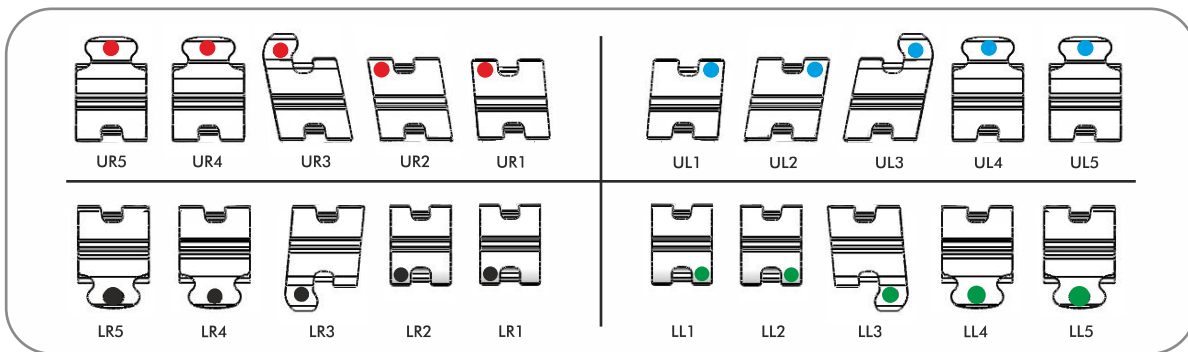
**Ultra-Smooth, Strong Hooks**  
For added patient comfort and secure engagement of elastics

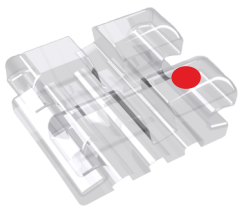




# d'art™

MINI BRACKET  
CERAMIC BRACKET SYSTEM



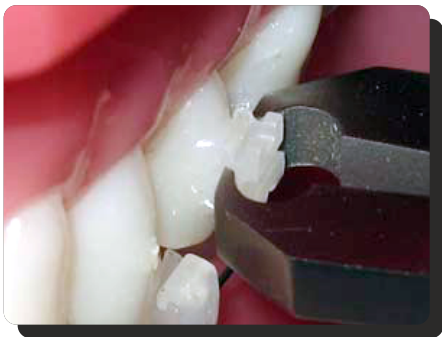


d'art™  
MINI BRACKET  
CERAMIC BRACKET SYSTEM

## Bonds & De-Bonds Just Like A Metal Bracket



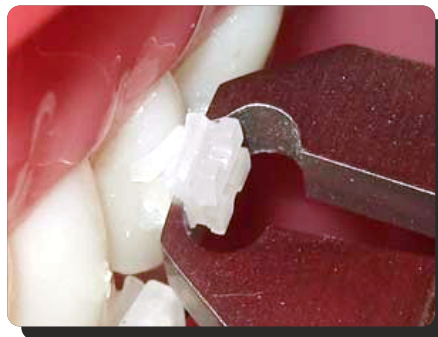
De-bonding tool to be used



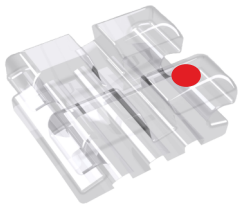
Grasp the brackets on the mesio-distal side close to the tooth



Wrong method of De-bonding



Twist the bracket 90° clockwise to safely remove the bracket



d'art™  
MINI BRACKET  
CERAMIC BRACKET SYSTEM

Roth Prescription

Maxillary ▲

	Tooth	Torque	Angle	Width	R/L	ID	.018	.022
1   1	Central	+12°	+5°	.127"	R	●	BTD-R8-001	BTD-R2-001
					L	●	BTD-R8-002	BTD-R2-002
2   2	Lateral	+8°	+9°	.125"	R	●	BTD-R8-003	BTD-R2-003
					L	●	BTD-R8-004	BTD-R2-004
3   3	Cuspid with Hook	0°	+11°	.128"	R	●	BTD-R8-005	BTD-R2-005
					L	●	BTD-R8-006	BTD-R2-006
4/5   4/5	1 <sup>st</sup> & 2 <sup>nd</sup> Bicuspid	-7°	0°	.128"	R	●	BTD-R8-009	BTD-R2-009
					L	●	BTD-R8-010	BTD-R2-010
4/5   4/5	1 <sup>st</sup> & 2 <sup>nd</sup> Bicuspid Hk	-7°	0°	.128"	R	●	BTD-R8-011	BTD-R2-011
					L	●	BTD-R8-012	BTD-R2-012

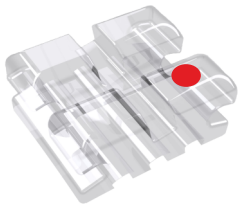
Roth Prescription

Mandibular ▼

	Tooth	Torque	Angle	Width	R/L	ID	.018	.022
1/2   1/2	Lower Anterior	0°	0°	.110"	R	●	BTD-R8-014	BTD-R2-014
					L	●	BTD-R8-015	BTD-R2-015
3   3	Cuspid With hook	-11°	+5°	.126"	R	●	BTD-R8-016	BTD-R2-016
					L	●	BTD-R8-017	BTD-R2-017
4   4	1st Bicuspid	-17°	0°	.128"	R	●	BTD-R8-020	BTD-R2-020
					L	●	BTD-R8-021	BTD-R2-021
4   4	1 <sup>st</sup> Bicuspid with hook	-17°	0°	.128"	R	●	BTD-R8-022	BTD-R2-022
					L	●	BTD-R8-023	BTD-R2-023
5   5	2 <sup>nd</sup> Bicuspid	-22°	0°	.128"	R	●	BTD-R8-024	BTD-R2-024
					L	●	BTD-R8-025	BTD-R2-025
5   5	2 <sup>nd</sup> Bicuspid with hook	-22°	0°	.128"	R	●	BTD-R8-026	BTD-R2-026
					L	●	BTD-R8-027	BTD-R2-027

Full Kits ▲▼

Kits	.018	.022
Upper/Lower 5x5 Hook on 3	BKD-R8-102	BKD-R2-102
Upper/Lower 5x5 Hooks on 3,4 & 5	BKD-R8-104	BKD-R2-104



MBT Prescription

Maxillary ▲

	Tooth	Torque	Angle	Width	R/L	ID	.018	.022
1 1	Central	+17°	+4°	.125"	R	●	BTD-M8-101	BTD-M2-101
					L	●	BTD-M8-102	BTD-M2-102
2 2	Lateral	+10°	+8°	.122"	R	●	BTD-M8-103	BTD-M2-103
					L	●	BTD-M8-104	BTD-M2-104
3 3	Cuspid with hook	0°	+9°	.122"	R	●	BTD-M8-105	BTD-M2-105
					L	●	BTD-M8-106	BTD-M2-106
3 3	Cuspid with hook	-7°	+9°	.122"	R	●	BTD-M8-107	BTD-M2-107
					L	●	BTD-M8-108	BTD-M2-108
4/5 4/5	1 <sup>st</sup> & 2 <sup>nd</sup> Bicuspid	-7°	0°	.122"	R	●	BTD-M8-109	BTD-M2-109
					L	●	BTD-M8-110	BTD-M2-110
4/5 4/5	1 <sup>st</sup> & 2 <sup>nd</sup> Bicuspid Hk	-7°	0°	.122"	R	●	BTD-M8-111	BTD-M2-111
					L	●	BTD-M8-112	BTD-M2-112

MBT Prescription

Mandibular ▼

	Tooth	Torque	Angle	Width	R/L	ID	.018	.022
1/2 1/2	Lower Anterior	-6°	0°	.116"	R	●	BTD-M8-114	BTD-M2-114
					L	●	BTD-M8-115	BTD-M2-115
3 3	Cuspid with hook	0°	+3°	.122"	R	●	BTD-M8-116	BTD-M2-116
					L	●	BTD-M8-117	BTD-M2-117
3 3	Cuspid with hook	-6°	+3°	.122"	R	●	BTD-M8-118	BTD-M2-118
					L	●	BTD-M8-119	BTD-M2-119
4 4	1 <sup>st</sup> Bicuspid	-12°	+2°	.122"	R	●	BTD-M8-120	BTD-M2-120
					L	●	BTD-M8-121	BTD-M2-121
4 4	1 <sup>st</sup> Bicuspid with hook	-12°	+2°	.122"	R	●	BTD-M8-122	BTD-M2-122
					L	●	BTD-M8-123	BTD-M2-123
5 5	2 <sup>nd</sup> Bicuspid	-17°	+2°	.122"	R	●	BTD-M8-124	BTD-M2-124
					L	●	BTD-M8-125	BTD-M2-125
5 5	2 <sup>nd</sup> Bicuspid with hook	-17°	+2°	.122"	R	●	BTD-M8-126	BTD-M2-126
					L	●	BTD-M8-127	BTD-M2-127

Full Kits ▲▼

Kits	.018	.022
Upper/Lower 5x5 Hook on 3	BKD-M8-102*	BKD-M2-102*
Upper/Lower 5x5 Hooks on 3,4 & 5	BKD-M8-104*	BKD-M2-104*
Upper/Lower 5x5 Hook on 3	BKD-M8-202	BKD-M2-202
Upper/Lower 5x5 Hooks on 3,4 & 5	BKD-M8-204	BKD-M2-204

\* Cuspid brackets in these Kits are having -7 deg torque in uppers and -6 deg torque in lowers.  
Other kits have 0 deg torque in all cuspids.  
For any other cuspid torque combination, please place order for individual brackets.