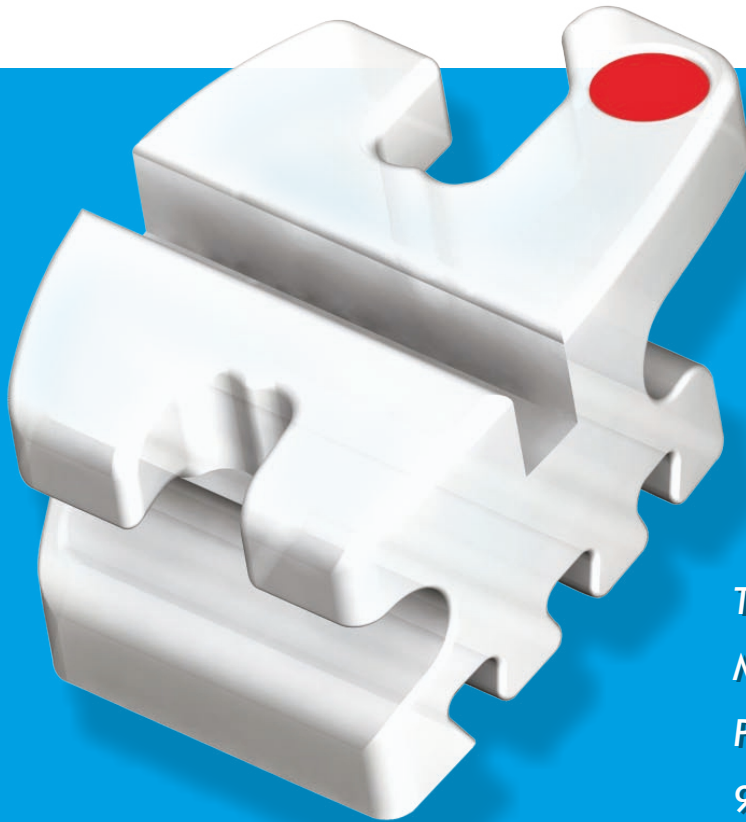


Purity™

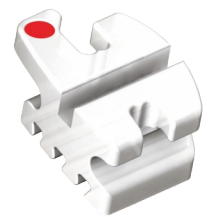
POLY CRYSTALLINE

CERAMIC BRACKETS

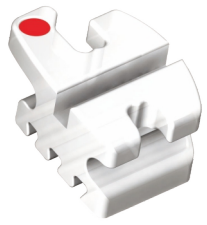
by Modern Orthodontics



Translucent
Micro Crack Free
Pure Mechanical Bonding
99.99% Pure Alumina



Compare to
Illusion Plus™ by Ortho Organizers
Eclipse™ by Masel, Reflections™ by Ortho Technology



Purity™
POLY CRYSTALLINE
CERAMIC BRACKET SYSTEM

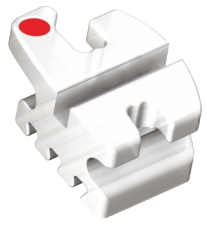
Purity™
Poly-Crystalline
CERAMIC BRACKET SYSTEM

Compare to
Illusion Plus™ by Ortho Organizers
Eclipse™ by Masel, Reflections™ by Ortho Technology

Dove Tail Grooves
for pure
mechanical bonding

99.99% Pure Alumina
Extremely resistant to slot wear
cracking and fracturing

Translucent
for pleasing aesthetics
Disappears on the tooth



Purity™
POLY CRYSTALLINE
CERAMIC BRACKET SYSTEM

Removable Color Coded ID Dot
For easy bracket selection

Ultra-Smooth, Strong Hooks
For added patient comfort and
secure engagement of elastics

Smooth, Strong and
Contoured Tie Wings
For added patient comfort

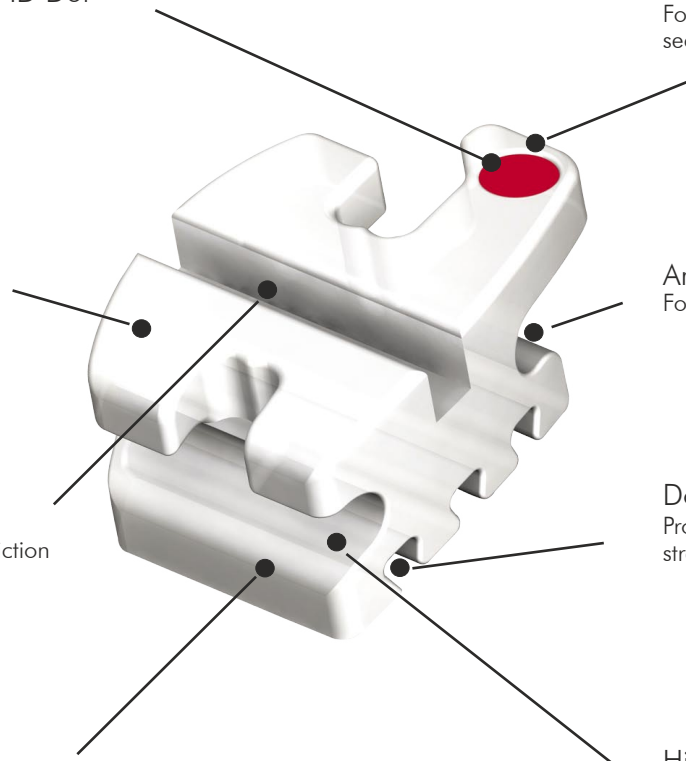
Ample Tie Wing Area
For easy bracket ligation

Archwire Slot Design
Resists deformation and less friction
for superior sliding mechanics

Dovetail Bonding Base
Provides superior mechanical bond
strength and predictable debonding

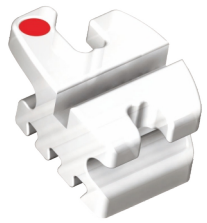
Compound Contour Base
Provides simplified and accurate
bracket placement

Highest Quality Material
Made from high quality poly
urethane composite

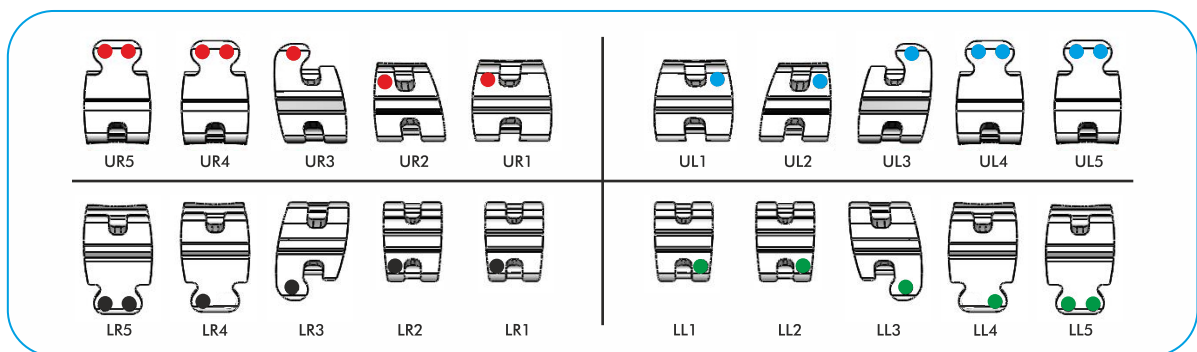
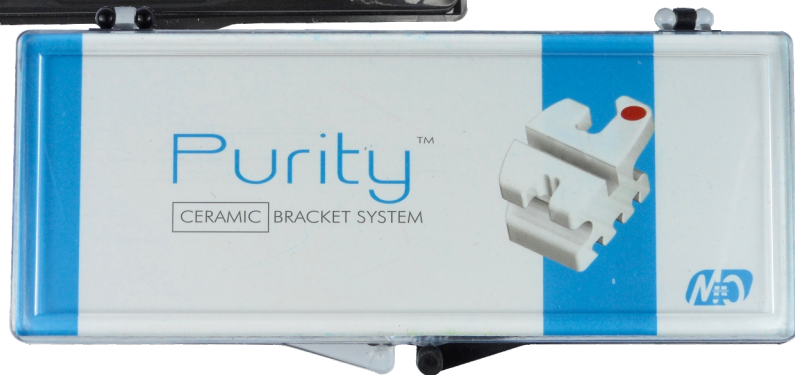


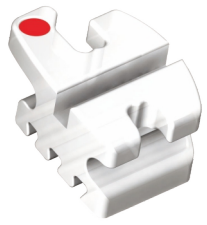
Compare to
Illusion Plus™ by Ortho Organizers
Eclipse™ by Masel, Reflections™ by Ortho Technology





Purity™
POLY CRYSTALLINE
CERAMIC BRACKET SYSTEM



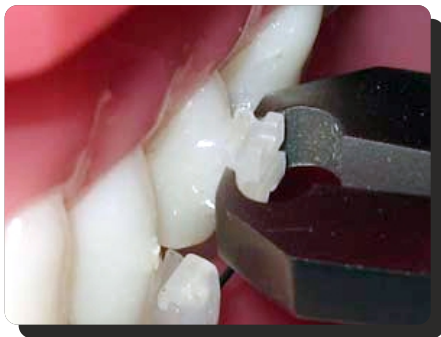


Purity™
POLY CRYSTALLINE
CERAMIC BRACKET SYSTEM

Bonds & De-Bonds Just Like A Metal Bracket



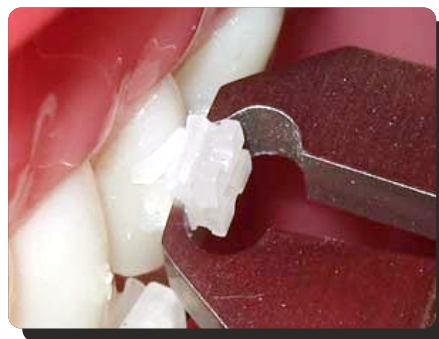
De-bonding tool to be used



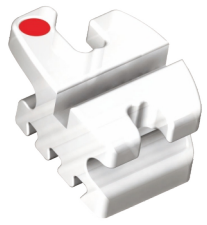
Grasp the brackets on the mesio-distal side close to the tooth



Wrong method of De-bonding



Twist the bracket 90° clockwise to safely remove the bracket



Purity™
POLY CRYSTALLINE
CERAMIC BRACKET SYSTEM

Roth Prescription

Maxillary ▲

	Tooth	Torque	Angle	Width	R/L	ID	.018	.022
1 1	Central	+12°	+5°	.155"	R	●	BTP-R8-001	BTP-R2-001
					L	●	BTP-R8-002	BTP-R2-002
2 2	Lateral	+8°	+9°	.133"	R	●	BTP-R8-003	BTP-R2-003
					L	●	BTP-R8-004	BTP-R2-004
3 3	Cuspid with Hook	0°	+11°	.131"	R	●	BTP-R8-005	BTP-R2-005
					L	●	BTP-R8-006	BTP-R2-006
4/5 4/5	1 st & 2 nd Bicuspid	-7°	0°	.130"	R	●	BTP-R8-009	BTP-R2-009
					L	●	BTP-R8-010	BTP-R2-010
4/5 4/5	1 st & 2 nd Bicuspid Hk	-7°	0°	.130"	R	●	BTP-R8-011	BTP-R2-011
					L	●	BTP-R8-012	BTP-R2-012

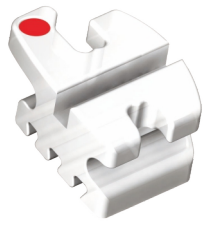
Roth Prescription

Mandibular ▼

	Tooth	Torque	Angle	Width	R/L	ID	.018	.022
1/2 1/2	Lower Anterior	0°	0°	.110"	R	●	BTP-R8-014	BTP-R2-014
					L	●	BTP-R8-015	BTP-R2-015
3 3	Cuspid With hook	-11°	+5°	.133"	R	●	BTP-R8-016	BTP-R2-016
					L	●	BTP-R8-017	BTP-R2-017
4 4	1st Bicuspid	-17°	0°	.133"	R	●	BTP-R8-020	BTP-R2-020
					L	●	BTP-R8-021	BTP-R2-021
4 4	1st Bicuspid with hook	-17°	0°	.133"	R	●	BTP-R8-022	BTP-R2-022
					L	●	BTP-R8-023	BTP-R2-023
5 5	2 nd Bicuspid	-22°	0°	.133"	R	●	BTP-R8-024	BTP-R2-024
					L	●	BTP-R8-025	BTP-R2-025
5 5	2 nd Bicuspid with hook	-22°	0°	.133"	R	●	BTP-R8-026	BTP-R2-026
					L	●	BTP-R8-027	BTP-R2-027

Full Kits ▲▼

Kits	.018	.022
Upper/Lower 5x5 Hook on 3	BKP-R8-102	BKP-R2-102
Upper/Lower 5x5 Hooks on 3,4 & 5	BKP-R8-104	BKP-R2-104



MBT Prescription
Maxillary ▲

	Tooth	Torque	Angle	Width	R/L	ID	.018	.022
1 1	Central	+17°	+4°	.125"	R	●	BTP-M8-101	BTP-M2-101
					L	●	BTP-M8-102	BTP-M2-102
2 2	Lateral	+10°	+8°	.122"	R	●	BTP-M8-103	BTP-M2-103
					L	●	BTP-M8-104	BTP-M2-104
3 3	Cuspid with hook	0°	+9°	.122"	R	●	BTP-M8-105	BTP-M2-105
					L	●	BTP-M8-106	BTP-M2-106
3 3	Cuspid with hook	-7°	+9°	.122"	R	●	BTP-M8-107	BTP-M2-107
					L	●	BTP-M8-108	BTP-M2-108
4/5 4/5	1 st & 2 nd Bicuspid	-7°	0°	.122"	R	●	BTP-M8-109	BTP-M2-109
					L	●	BTP-M8-110	BTP-M2-110
4/5 4/5	1 st & 2 nd Bicuspid Hk	-7°	0°	.122"	R	●	BTP-M8-111	BTP-M2-111
					L	●	BTP-M8-112	BTP-M2-112

MBT Prescription
Mandibular ▼

	Tooth	Torque	Angle	Width	R/L	ID	.018	.022
1/2 1/2	Lower Anterior	-6°	0°	.116"	R	●	BTP-M8-114	BTP-M2-114
					L	●	BTP-M8-115	BTP-M2-115
3 3	Cuspid with hook	0°	+3°	.122"	R	●	BTP-M8-116	BTP-M2-116
					L	●	BTP-M8-117	BTP-M2-117
3 3	Cuspid with hook	-6°	+3°	.122"	R	●	BTP-M8-118	BTP-M2-118
					L	●	BTP-M8-119	BTP-M2-119
4 4	1 st Bicuspid	-12°	+2°	.122"	R	●	BTP-M8-120	BTP-M2-120
					L	●	BTP-M8-121	BTP-M2-121
4 4	1 st Bicuspid with hook	-12°	+2°	.122"	R	●	BTP-M8-122	BTP-M2-122
					L	●	BTP-M8-123	BTP-M2-123
5 5	2 nd Bicuspid	-17°	+2°	.122"	R	●	BTP-M8-124	BTP-M2-124
					L	●	BTP-M8-125	BTP-M2-125
5 5	2 nd Bicuspid with hook	-17°	+2°	.122"	R	●	BTP-M8-126	BTP-M2-126
					L	●	BTP-M8-127	BTP-M2-127

Full Kits ▲▼

Kits	.018	.022
Upper/Lower 5x5 Hook on 3	BKP-M8-102*	BKP-M2-102*
Upper/Lower 5x5 Hooks on 3,4 & 5	BKP-M8-104*	BKP-M2-104*
Upper/Lower 5x5 Hook on 3	BKP-M8-202	BKP-M2-202
Upper/Lower 5x5 Hooks on 3,4 & 5	BKP-M8-204	BKP-M2-204

* Cuspid brackets in these Kits are having -7 deg torque in uppers and -6 deg torque in lowers.
Other kits have 0 deg torque in all cuspids.
For any other cuspid torque combination, please place order for individual brackets.