

Purity-MSTM

BRAZED METAL SLOT

CERAMIC BRACKETS

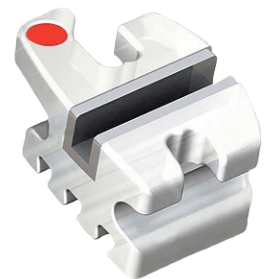
by Modern Orthodontics

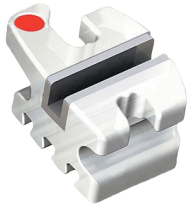


Non Allergic Metal Slot
Ultra Smooth Slot
Pure Mechanical Bonding
99.99% Pure Alumina



Compare to
ClarityTM by 3M Unitek
EncoreTM by Ortho Technology





Purity-MSTM
BRAZED METAL SLOT
CERAMIC BRACKET SYSTEM

Purity-MSTM

Ceramic Bracket System With Metal Slot

Compare to
ClarityTM by 3M Unitek
EncoreTM by Ortho Technology

Dove Tail Grooves

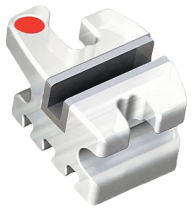
for pure
mechanical bonding

Metal Slot

for improving sliding mechanics and
to withstand higher torquing forces

Non Allergic

Metal insert made of Silver or Niobium
for patients allergic to stainless steel



Purity-MS™
BRAZED METAL SLOT
CERAMIC BRACKET SYSTEM

High Quality Material
Made from high quality poly
crystalline ceramic

Removable Colour Coded ID Dot
For easy bracket selection

Ultra Smooth, Strong Hooks
For added patient comfort and
secure engagement of elastics

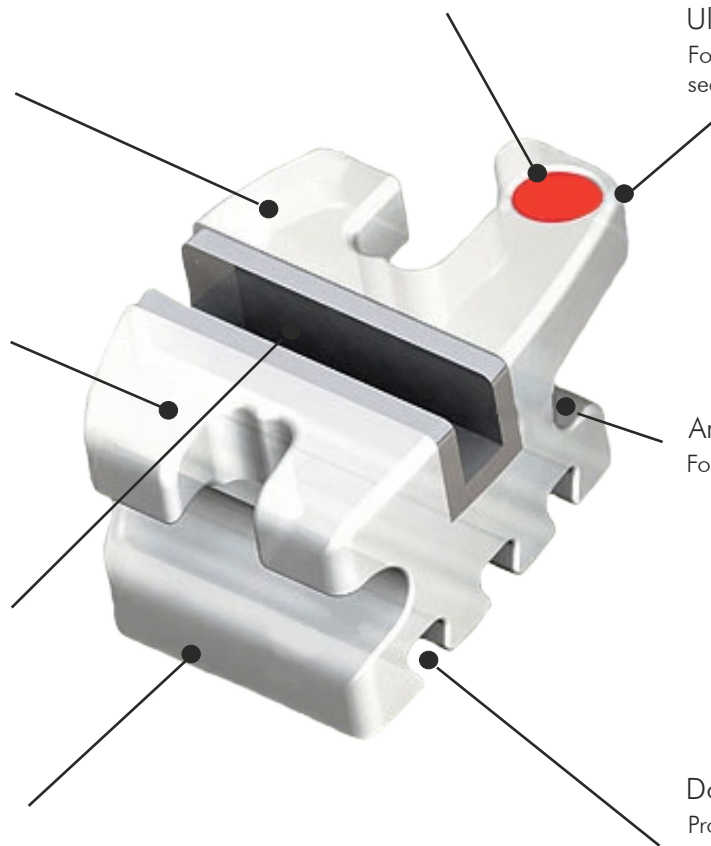
Smooth, Strong and
Contoured Tie Wings
For added patient comfort

Ample Tie Wing Area
For easy bracket ligation

Nickel Free Metal Slot
Low friction mechanics
Safe for sensitive patients

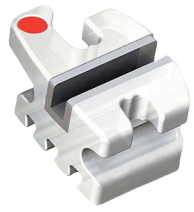
Compound Contour Base
Provides simplified and accurate
bracket placement

Dovetail Bonding Base
Provides superior mechanical bond
strength and predictable debonding



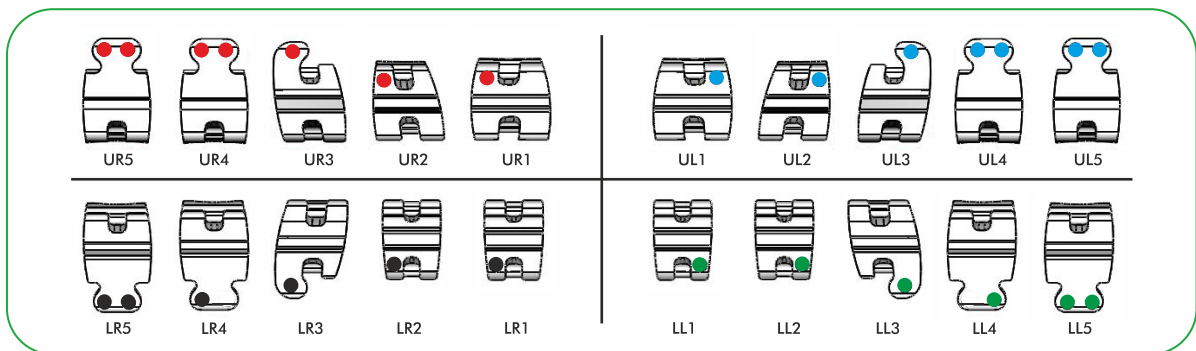
Compare to
Clarity™ by 3M Unitek
Encore™ by Ortho Technology





Purity-MS™

BRAZED METAL SLOT
CERAMIC BRACKET SYSTEM





Purity-MS™
BRAZED METAL SLOT
CERAMIC BRACKET SYSTEM

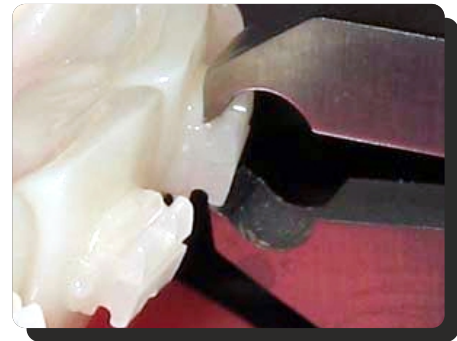
Bonds & De-Bonds Just Like A Metal Bracket



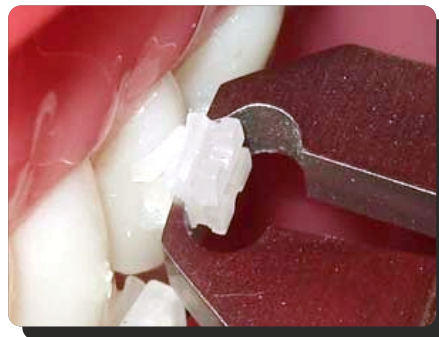
De-bonding tool to be used



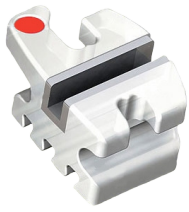
Grasp the brackets on the mesio-distal side close to the tooth



Wrong method of De-bonding



Twist the bracket 90° clockwise to safely remove the bracket



Purity-MS™
BRAZED METAL SLOT
CERAMIC BRACKET SYSTEM

Roth Prescription

Maxillary ▲

	Tooth	Torque	Angle	Width	R/L	ID	.018	.022
<u>1 1</u>	Central	+12°	+5°	.155"	R	●	BTP-R8-301	BTP-R2-301
					L	●	BTP-R8-302	BTP-R2-302
<u>2 2</u>	Lateral	+8°	+9°	.133"	R	●	BTP-R8-303	BTP-R2-303
					L	●	BTP-R8-304	BTP-R2-304
<u>3 3</u>	Cuspid with Hook	0°	+11°	.131"	R	●	BTP-R8-305	BTP-R2-305
					L	●	BTP-R8-306	BTP-R2-306
<u>4/5 4/5</u>	1 st & 2 nd Bicuspid	-7°	0°	.130"	R	●	BTP-R8-309	BTP-R2-309
					L	●	BTP-R8-310	BTP-R2-310
<u>4/5 4/5</u>	1 st & 2 nd Bicuspid Hk	-7°	0°	.130"	R	●	BTP-R8-311	BTP-R2-311
					L	●	BTP-R8-312	BTP-R2-312

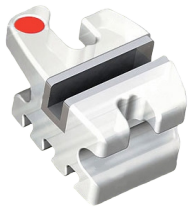
Roth Prescription

Mandibular ▼

	Tooth	Torque	Angle	Width	R/L	ID	.018	.022
<u>1/2 1/2</u>	Lower Anterior	0°	0°	.110"	R	●	BTP-R8-314	BTP-R2-314
					L	●	BTP-R8-315	BTP-R2-315
<u>3 3</u>	Cuspid With hook	-11°	+5°	.133"	R	●	BTP-R8-316	BTP-R2-316
					L	●	BTP-R8-317	BTP-R2-317
<u>4 4</u>	1st Bicuspid	-17°	0°	.133"	R	●	BTP-R8-320	BTP-R2-320
					L	●	BTP-R8-321	BTP-R2-321
<u>4 4</u>	1 st Bicuspid with hook	-17°	0°	.133"	R	●	BTP-R8-322	BTP-R2-322
					L	●	BTP-R8-323	BTP-R2-323
<u>5 5</u>	2 nd Bicuspid	-22°	0°	.133"	R	●	BTP-R8-324	BTP-R2-324
					L	●	BTP-R8-325	BTP-R2-325
<u>5 5</u>	2 nd Bicuspid with hook	-22°	0°	.133"	R	●	BTP-R8-326	BTP-R2-326
					L	●	BTP-R8-327	BTP-R2-327

Full Kits ▲▼

Kits	.018	.022
Upper/Lower 5x5 Hook on 3	BKP-R8-112	BKP-R2-112
Upper/Lower 5x5 Hooks on 3,4 & 5	BKP-R8-114	BKP-R2-114



Purity-MS™
BRAZED METAL SLOT
CERAMIC BRACKET SYSTEM

MBT Prescription
Maxillary ▲

	Tooth	Torque	Angle	Width	R/L	ID	.018	.022
1 1	Central	+17°	+4°	.125"	R	●	BTP-M8-301	BTP-M2-301
					L	●	BTP-M8-302	BTP-M2-302
2 2	Lateral	+10°	+8°	.122"	R	●	BTP-M8-303	BTP-M2-303
					L	●	BTP-M8-304	BTP-M2-304
3 3	Cuspid with hook	0°	+9°	.122"	R	●	BTP-M8-305	BTP-M2-305
					L	●	BTP-M8-306	BTP-M2-306
3 3	Cuspid with hook	-7°	+9°	.122"	R	●	BTP-M8-307	BTP-M2-307
					L	●	BTP-M8-308	BTP-M2-308
4/5 4/5	1 st & 2 nd Bicuspid	-7°	0°	.122"	R	●	BTP-M8-309	BTP-M2-309
					L	●	BTP-M8-310	BTP-M2-310
4/5 4/5	1 st & 2 nd Bicuspid Hk	-7°	0°	.122"	R	●	BTP-M8-311	BTP-M2-311
					L	●	BTP-M8-312	BTP-M2-312

MBT Prescription
Mandibular ▼

	Tooth	Torque	Angle	Width	R/L	ID	.018	.022
1/2 1/2	Lower Anterior	-6°	0°	.116"	R	●	BTP-M8-314	BTP-M2-314
					L	●	BTP-M8-315	BTP-M2-315
3 3	Cuspid with hook	0°	+3°	.122"	R	●	BTP-M8-316	BTP-M2-316
					L	●	BTP-M8-317	BTP-M2-317
3 3	Cuspid with hook	-6°	+3°	.122"	R	●	BTP-M8-318	BTP-M2-318
					L	●	BTP-M8-319	BTP-M2-319
4 4	1 st Bicuspid	-12°	+2°	.122"	R	●	BTP-M8-320	BTP-M2-320
					L	●	BTP-M8-321	BTP-M2-321
4 4	1 st Bicuspid with hook	-12°	+2°	.122"	R	●	BTP-M8-322	BTP-M2-322
					L	●	BTP-M8-323	BTP-M2-323
5 5	2 nd Bicuspid	-17°	+2°	.122"	R	●	BTP-M8-324	BTP-M2-324
					L	●	BTP-M8-325	BTP-M2-325
5 5	2 nd Bicuspid with hook	-17°	+2°	.122"	R	●	BTP-M8-326	BTP-M2-326
					L	●	BTP-M8-327	BTP-M2-327

Full Kits ▲▼

Kits	.018	.022
Upper/Lower 5x5 Hook on 3	BKP-M8-112*	BKP-M2-112*
Upper/Lower 5x5 Hooks on 3,4 & 5	BKP-M8-114*	BKP-M2-114*
Upper/Lower 5x5 Hook on 3	BKP-M8-212	BKP-M2-212
Upper/Lower 5x5 Hooks on 3,4 & 5	BKP-M8-214	BKP-M2-214

* Cuspid brackets in these Kits are having -7 deg torque in uppers and -6 deg torque in lowers.
Other kits have 0 deg torque in all cuspids.
For any other cuspid torque combination, please place order for individual brackets.